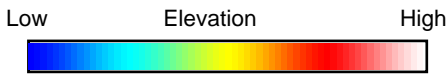
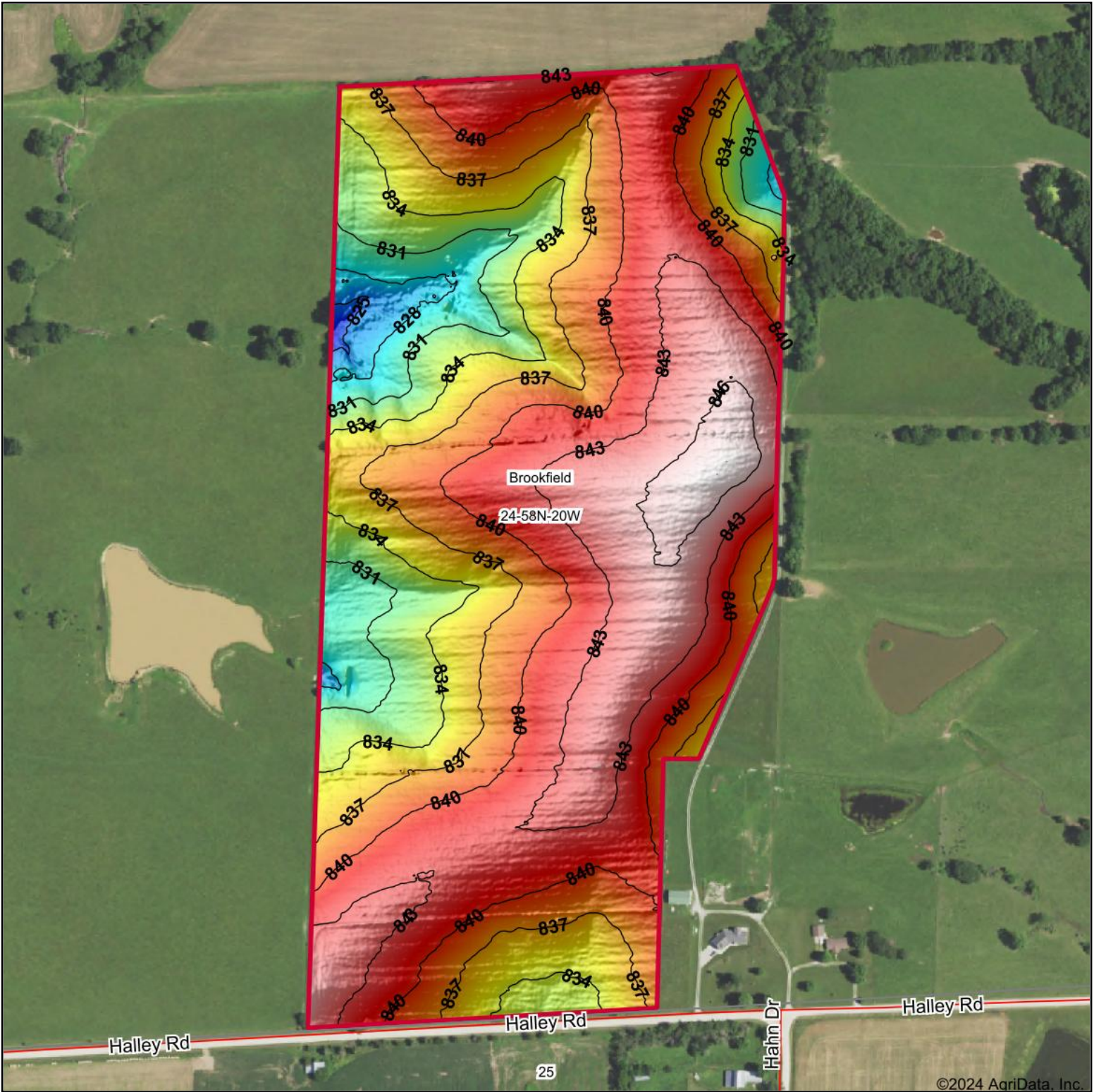
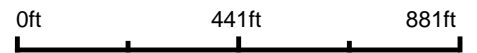


Topography Hillshade



Source: USGS 1 meter dem
 Interval(ft): 3
 Min: 822.2
 Max: 847.3
 Range: 25.1
 Average: 838.5
 Standard Deviation: 4.79 ft



24-58N-20W
Linn County
Missouri

Boundary Center: 39° 49' 45.81, -93° 5' 22.32

TETER
 AUCTION COMPANY

Maps Provided By:



© AgriData, Inc. 2023

www.AgriDataInc.com

©2024 AgriData, Inc.