

Farm 1365
Tract 525

C=Com-YEL-GR ALF=Alfalfa-FG
 SB=Soybean-COM-GR AGM=MIXFG-AGM-FG
 HRW=Wheat-HRW-GR LGM=MIXFG-LGM-FG
 SRW=Wheat-SRW-GR RCH=Clover-Red-FG
 MILO=Sorgh-GRS-GR H=MIXFG-IGS-FG
 O=Oats-SPG-GR P=MIXFG-IGS-GZ
 GLS=MIXFG-IGS-LS TP=Timber Pasture
 All Fields Are NON-Irrigated
 *Unless notated on Map

Harrison Co. FSA 1:7,720
Program Year: 2024
 Created: 12/12/2023
 Flown: 2022-6-28

**All Measurements are
For FSA Programs Only**

Wetland Determination Identifiers

- Restricted Use
- ▼ Limited Restrictions
- Exempt from Conservation Compliance Provisions

Disclaimer: Wetland identifiers do not represent the size, shape or specific determination of the area. Refer to your original determination (CPA-026 and attached maps) for exact wetland boundaries and determinations, or contact NRCS.





**All Measurements are
For FSA Programs Only**

Wetland Determination Identifiers

- Restricted Use
- ▼ Limited Restrictions
- Exempt from Conservation Compliance Provisions

Disclaimer: Wetland identifiers do not represent the size, shape or specific determination of the area. Refer to your original determination (CPA-026 and attached maps) for exact wetland boundaries and determinations, or contact NRCS.

Harrison Co. FSA

- | | |
|-------------------|-------------------|
| C=Com-YEL-GR | ALF=Alfalfa-FG |
| SB=Soybean-COM-GR | AGM=MIXFG-AGM-FG |
| HRW=Wheat-HRW-GR | LGM=MIXFG-LGM-FG |
| SRW=Wheat-SRW-GR | RCH=Clover-Red-FG |
| MILO=Sorgh-GRS-GR | H=MIXFG-IGS-FG |
| O=Oats-SPG-GR | P=MIXFG-IGS-GZ |
| GLS=MIXFG-IGS-LS | TP=Timber Pasture |
- All Fields Are NON-Irrigated

*Unless notated on Map

1:4,310

Program Year: 2024

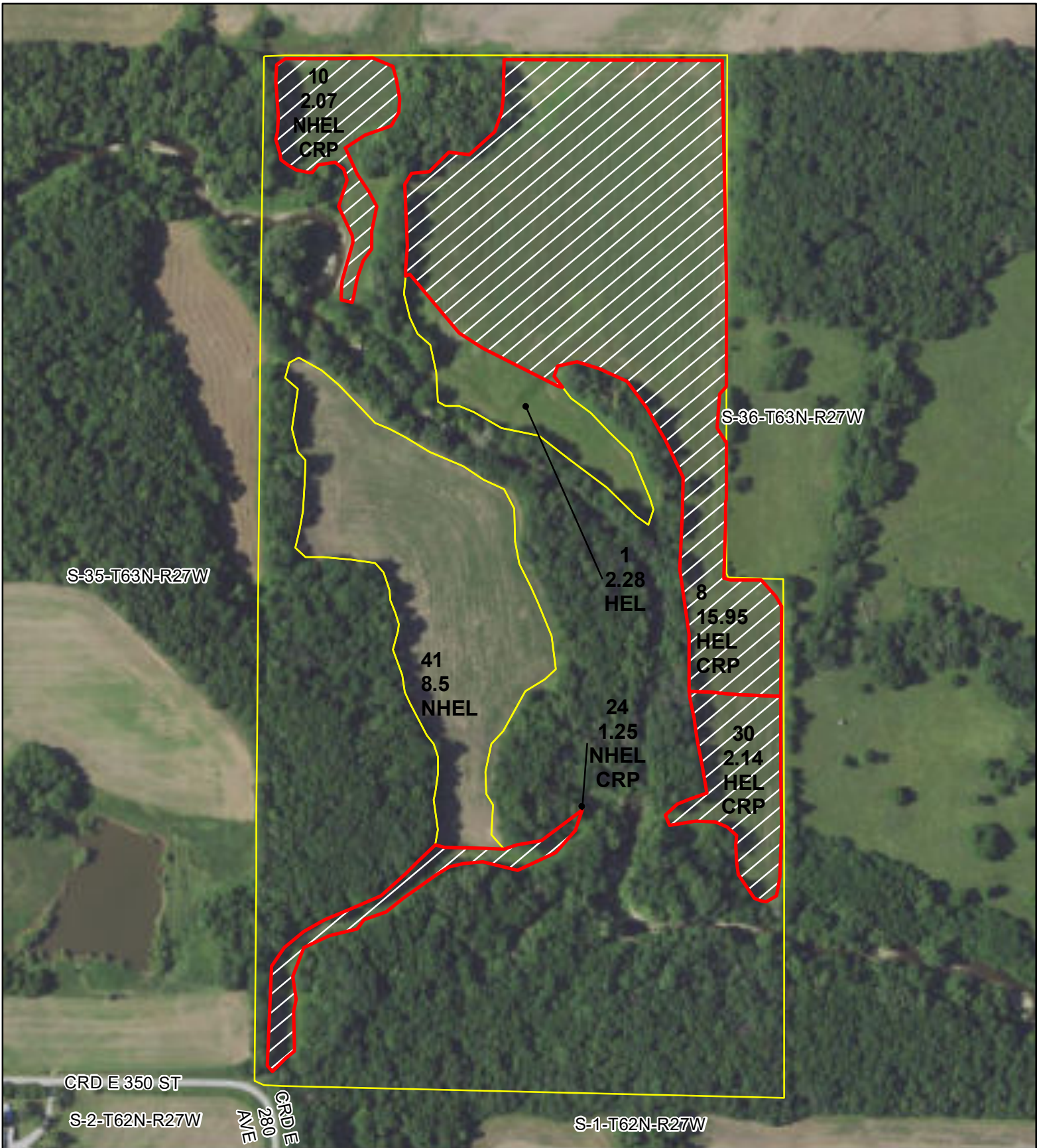
Created: 12/12/2023

Flown: 2022-6-29

- clu
- crp
- psss

**Farm 1365
Tract 512**





All Measurements are
For FSA Programs Only

- Wetland Determination Identifiers**
- Restricted Use
 - ▼ Limited Restrictions
 - Exempt from Conservation Compliance Provisions

Disclaimer: Wetland identifiers do not represent the size, shape or specific determination of the area. Refer to your original determination (CPA-026 and attached maps) for exact wetland boundaries and determinations, or contact NRCS.

Harrison Co. FSA

- | | |
|-------------------|-------------------|
| C=Com-YEL-GR | ALF=Alfalfa-FG |
| SB=Soybean-COM-GR | AGM=MIXFG-AGM-FG |
| HRW=Wheat-HRW-GR | LGM=MIXFG-LGM-FG |
| SRW=Wheat-SRW-GR | RCH=Clover-Red-FG |
| MILO=Sorgh-GRS-GR | H=MIXFG-IGS-FG |
| O=Oats-SPG-GR | P=MIXFG-IGS-GZ |
| GLS=MIXFG-IGS-LS | TP=Timber Pasture |
- All Fields Are NON-Irrigated
*Unless notated on Map

1:3,880

Program Year: 2024
Created: 12/12/2023
Flown: 2022-6-28

- clu
- crp
- plss

**Farm 1365
Tract 544**





**All Measurements are
For FSA Programs Only**

Wetland Determination Identifiers

- Restricted Use
- ▼ Limited Restrictions
- Exempt from Conservation Compliance Provisions

Disclaimer: Wetland identifiers do not represent the size, shape or specific determination of the area. Refer to your original determination (CPA-026 and attached maps) for exact wetland boundaries and determinations, or contact NRCS.

Harrison Co. FSA

C=Com-YEL-GR	ALF=Alfalfa-FG
SB=Soybean-COM-GR	AGM=MIXFG-AGM-FG
HRW=Wheat-HRW-GR	LGM=MIXFG-LGM-FG
SRW=Wheat-SRW-GR	RCH=Clover-Red-FG
MILO=Sorgh-GRS-GR	H=MIXFG-IGS-FG
O=Oats-SPG-GR	P=MIXFG-IGS-GZ
GLS=MIXFG-IGS-LS	TP=Timber Pasture

All Fields Are NON-Irrigated

*Unless notated on Map

1:2,450

Program Year: 2024

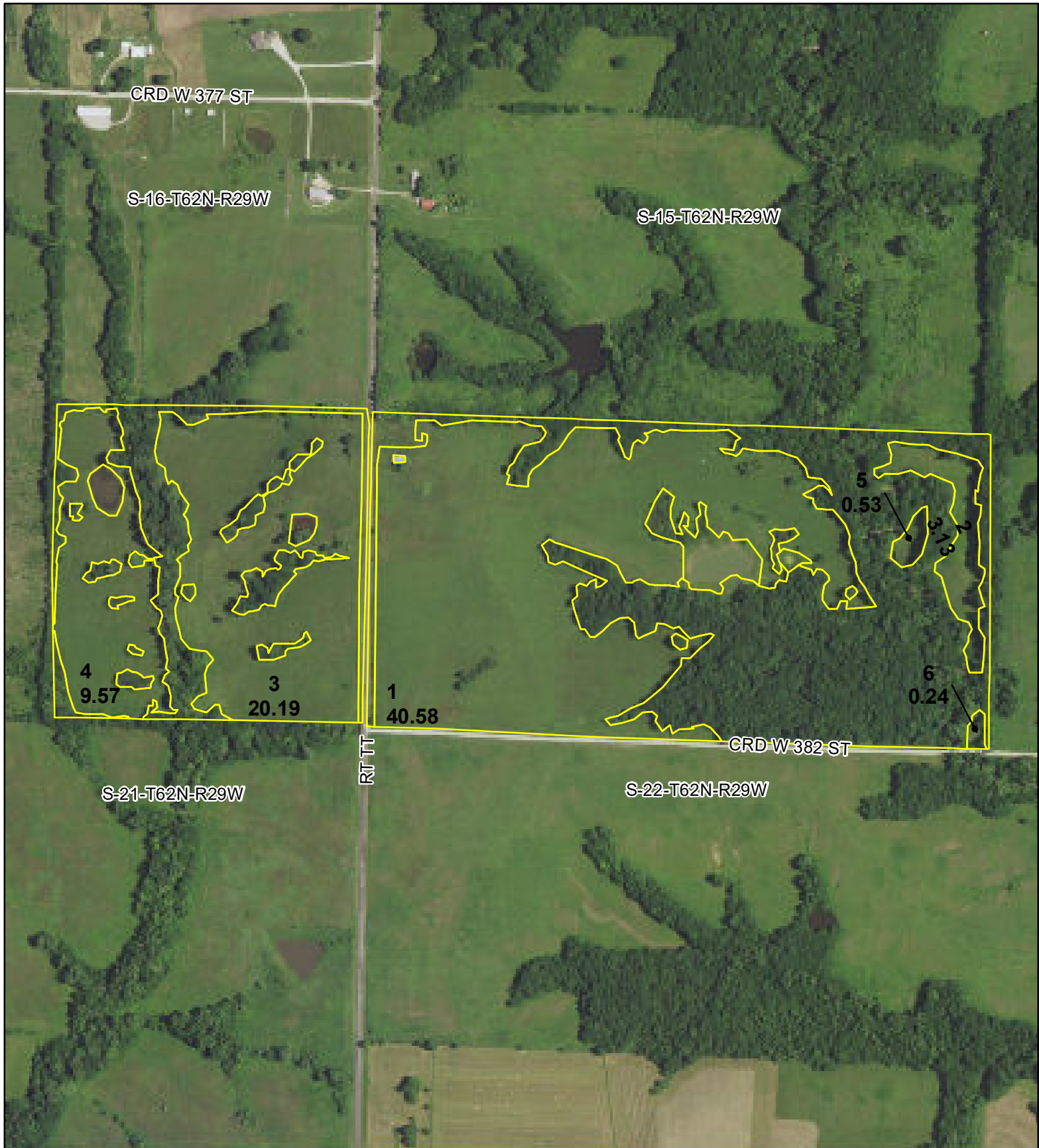
Created: 12/12/2023

Flown: 2022-6-29

- clu
- crp
- psss

**Farm 3535
Tract 3615**





**All Measurements are
For FSA Programs Only**

Wetland Determination Identifiers

- Restricted Use
- ▼ Limited Restrictions
- Exempt from Conservation Compliance Provisions

Disclaimer: Wetland identifiers do not represent the size, shape or specific determination of the area. Refer to your original determination (CPA-026 and attached maps) for exact wetland boundaries and determinations, or contact NRCS.

Harrison Co. FSA

- | | |
|-------------------|-------------------|
| C=Com-YEL-GR | ALF=Alfalfa-FG |
| SB=Soybean-COM-GR | AGM=MIXFG-AGM-FG |
| HRW=Wheat-HRW-GR | LGM=MIXFG-LGM-FG |
| SRW=Wheat-SRW-GR | RCH=Clover-Red-FG |
| MLO=Sorgh-GRS-GR | H=MIXFG-IGS-FG |
| O=Oats-SPG-GR | P=MIXFG-IGS-GZ |
| GLS=MIXFG-IGS-LS | TP=Timber Pasture |
- All Fields Are NON-Irrigated

*Unless notated on Map

1:6,440

Program Year: 2024

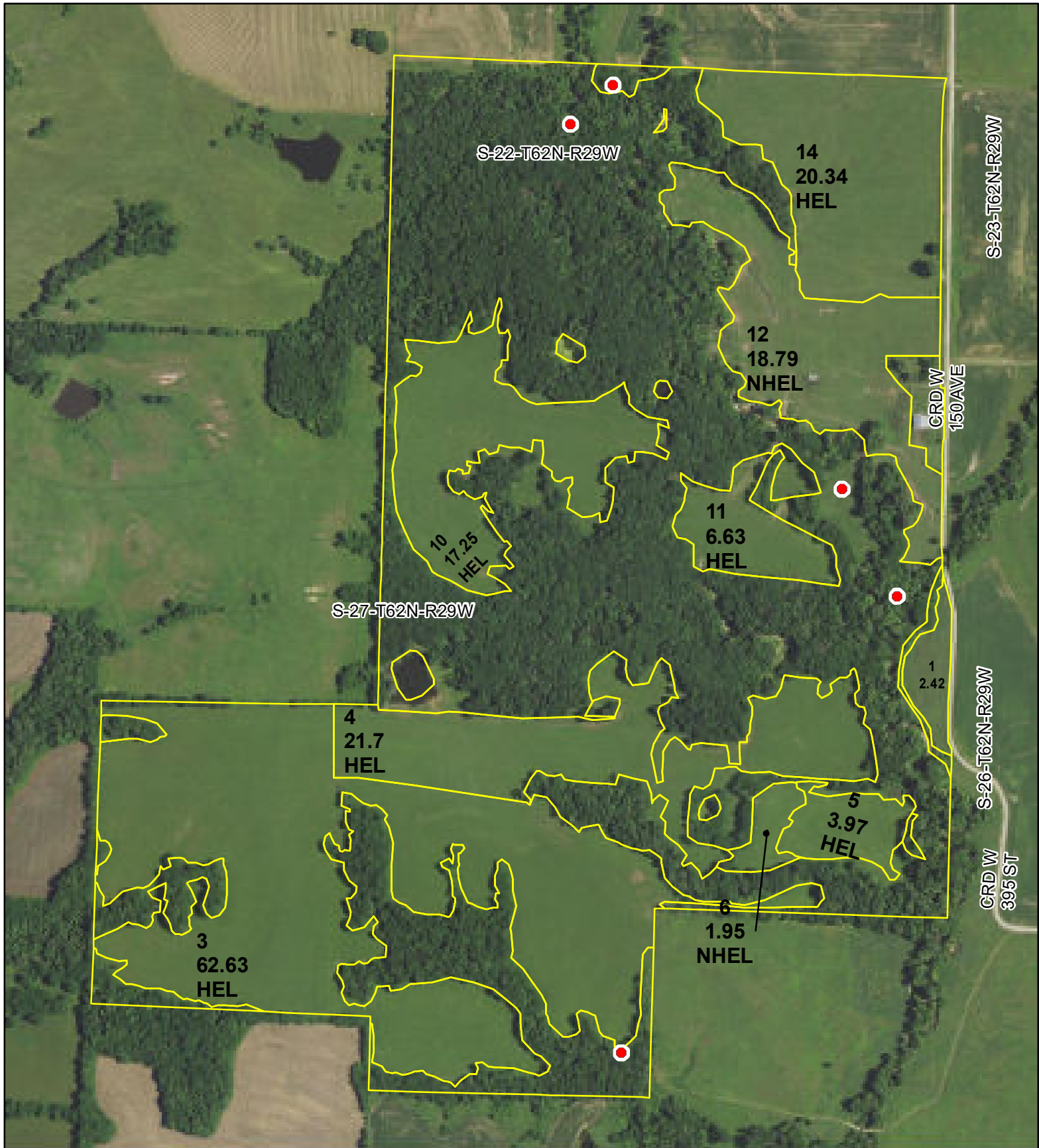
Created: 5/24/2024

Flown: 2022-6-29

- clu
- crp
- plss

**Farm 3477
Tract 30**





All Measurements are For FSA Programs Only

Harrison Co. FSA

1:7,190

C=Com-YEL-GR ALF=Alfalfa-FG
 SB=Soybean-COM-GR AGM=MIXFG-AGM-FG
 HRW=Wheat-HRW-GR LGM=MIXFG-LGM-FG
 SRW=Wheat-SRW-GR RCH=Clover-Red-FG
 MILO=Sorgh-GRS-GR H=MIXFG-IGS-FG
 O=Oats-SPG-GR P=MIXFG-IGS-GZ
 GLS=MIXFG-IGS-LS TP=Timber Pasture
 All Fields Are NON-Irrigated

Program Year: 2024

Created: 5/24/2024

Flown: 2022-6-29

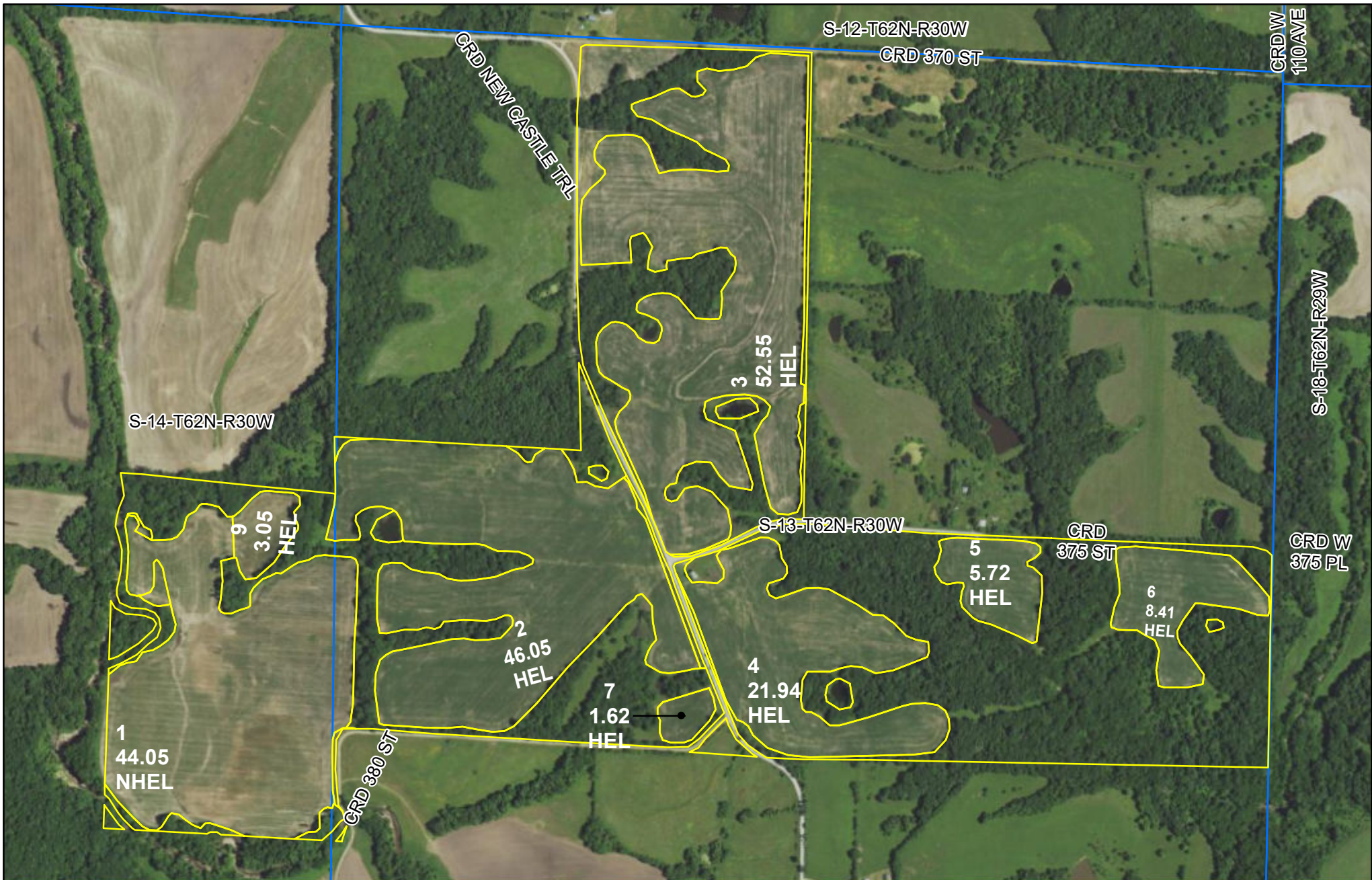
clu
 crp
 plss

**Farm 3477
 Tract 36**

Disclaimer: Wetland identifiers do not represent the size, shape or specific determination of the area. Refer to your original determination (CPA-026 and attached maps) for exact wetland boundaries and determinations, or contact NRCS.

*Unless notated on Map





- crp
- clu
- plss

C=Corn-Yel-GR / PP C=prevent plant corn
 SB=Soybn-Corn-GR / PP SB=prevent soybn
 SRW=Wheat-Soft red winter-GR
 H=Mixforage-IGS-FG / P=Mixforage-IGS-GZ
 GLS=Mixed forage-IGS-LS
 CEG=Cover Crop-Cereals & other grasses
 ALF=Alfal-FG
 AGM=Mixed Forage, Alfalfa Grass Mix, FG
 All crops are non irrigated

Gentry Co. FSA

1 inch equals 728 feet

Wetland Determination Identifiers

- Restricted Use
- ▼ Limited Restrictions
- Exempt from Conservation Compliance Provisions



Farm 2836
Tract 1327

Program Year: 2024

Created: 10/16/2023

Flown: 2022-6-29

**All Measurements are
For FSA Programs Only**

Disclaimer: Wetland identifiers do not represent the size, shape or specific determination of the area. Refer to your original determination (CPA-026 and attached maps) for exact wetland boundaries and determinations, or contact NRCS.